

The Guide



WINTER

January February March 2020

Checker Cab Co.
778-590

A complete guide of activities for Fort Riley Family and MWR

riley.armymwr.com • facebook.com/rileymwr

Oh Manhattan!

Oh, are the holidays special in MHK. Just blocks from downtown, Blue Earth Plaza transforms to festive sights and sounds of the season. Join us!



Manhattan Military
Relations Committee

VISITMANHATTANKS.ORG

We accept TriCare Select/Standard!

Primary Care for the Family

We specialize in:

Family Medicine

Women's Health

Pediatrics

Diabetes

Weight Loss

Orthopedic Injections



2900 Amherst Ave. | 785-539-8700

ManhattanMedGroup.com

Hours: 8am-5pm M-F Walk-ins welcome!

**PROUDLY
SUPPORTING
THOSE WHO
SERVE AND
THEIR FAMILIES!**

**SEE US FOR SPECIAL
MILITARY PRICING!**

Briggs
AUTO GROUP

Paid advertising does not imply endorsement by U.S. Army





FAMILY AND MWR HEADQUARTERS

500 Huebner Road
Fort Riley, KS 66442
785-239-3467

DIRECTOR OF FAMILY AND MWR

Tod A. Scalf

This publication is produced by
Family and MWR Marketing:

KEN ROYNON
CHRIS DUMLER
HOPE JACKSON
CHRIS GOODMILLER

To advertise in this quarterly publication, contact
Ken Roynon at 785-239-1107.

PAGE

04

• JANUARY CALENDAR

06

• FEBRUARY CALENDAR

08

• MARCH CALENDAR

10

• MAPS

14

• DIRECTORY

ADVERTISER

Manhattan CVB
Manhattan Medical Group
Briggs
Children's Mercy
Cloud County Community College
Manhattan Arts Center
CL Hoover Opera House
Rolling Hills Zoo
KSU Global Campus
No Stone Unturned

PAGE

02
02
02
05
07
09
09
09
16
16

The Family and MWR Guide is an authorized, official quarterly magazine for Family and Morale, Welfare and Recreation activities within Fort Riley. Contents are not necessarily the official views of or endorsed by the U.S. Government, the Department of Defense, or the Fort Riley Command. Printed circulation is 10,000. The appearance of advertising in this publication does not constitute endorsement by the Department of the Army or the Fort Riley Morale, Welfare, and Recreation Fund. Everything advertised shall be made available for purchase, use or patronage without regard to race, color, religion, sex, national origin, age, marital status, physical handicap, political affiliation, or any other non-merit factor on the purchaser, user or patron. If a violation or rejection of this equal opportunity is confirmed, Family and MWR shall refuse to accept advertising from that source until the violation is corrected. The information in this issue is current at time of publication.

Activities and events are subject to change. For confirmation, please call the host facility or program.

JANUARY

CALENDAR OF ACTIVITIES

S	M	T	W	T	F	S
			01	02	03	04
05	06	07	08	09	10	11
12	13	14	15	16	17	18
19	20	21	22	23	24	25
26	27	28	29	30	31	

Color indicates activity type

INFORMATIONAL ACTIVITY

RECREATIONAL ACTIVITY

SPORTING ACTIVITY

SPECIAL SERVICE OFFER

Winter Fun

Make your vacation dreams come true! Stop by or schedule an appointment to let us know what we can do to send you on the trip of a lifetime. Special military offers available on cruises and popular theme parks resorts! \$50 deposit for reservation quotes unless ready to book day of Appointment!

iFly Kansas City Indoor Skydiving

(ages 3+) Weekend	\$61
Monday-Thursday	\$44

Ticket includes (2) 1 minute flights, all flight gear, flight certificate & a video and photo link of experience. Tunnel Hours: 10 AM to 10 PM.

Rolling Hills Zoo & Wildlife Park— Salina

Adult admission	\$11
Senior	\$10
Child (age 3-12)	\$6

Great Wolf Lodge Special

Call today and ask about our 2020 prices.

Gift Cards

Looking for a gift? We have B&B Gem Theatre Gift Cards available for purchase.

For a complete list of offers, call 785-239-5614 or stop by the Outdoor Adventure and Travel Center, 5202 Normandy Dr.

DAY	
31-01	New Year's Party • 6pm-2am • SpareTime Interactive • 785-239-4366 Free karaoke • Toast at midnight (earlier ball drop for children)
01-03	Registration for Winter Youth Team Sports • Parent Central • 785-239-9885 \$45 • Basketball, Futsal, Cheerleading • Grades K-8 • Season runs Jan. 13-Feb. 29
04	Paint & Sip • 6-9pm • Hobby Studio • 785-239-9205 \$30 plus \$1 per ounce of wine • Max is 2 glasses with no more than 3 oz/glass
04	Parents' Night Out • 6-11pm • Various CYS Facilities • 785-239-9885 Flat rate of \$25/child • CYS Saturday-night child care! • Reserve by Jan. 2
06	Winter Bounce Party • 10am-1pm • Equipment Checkout Center • 785-239-2363 \$5 per child (3+) • Parents are free • Bounce away those winter blues!
08,15,22,29	Strider Riders! Teach your Tot • 9-9:30am, 9:45-10:15am • Location TBD • 785-239-5412 \$5 per child • Parents are free • Ages 2-3:9-9:30am, Ages 4-5:9:45-10:15am
11,12,25,26	Water Safety Instructor Cert. Classes • 9am-6pm • Long Fitness Pool • 785-239-4683 Certification Class 1 • Meets each day
11	Parent Central Saturday Hours • 8:30am-1:30pm • 785-239-9885 Saturday service for CYS registration • Appointments available
11	Movie Night "Abominable" • 6:30pm • Post Library • 785-239-5305 Enjoy a free movie with popcorn and juice
11	Youth Archery Clinic • 10am-Noon • Equipment Checkout Center • 785-239-5412 \$15 per person • Must register by Jan.9 at Outdoor Adventure & Travel Center
11	Archery Tag Tournament • 2-5pm • Location TBD • 785-239-5412 \$35 per team (5-7 people) • Register by Jan. 9 at Outdoor Adventure & Travel Center
14	SFRG Child Care • 6:30-8:30pm • For SFRG meetings... or anything else! • 785-239-9885 \$10 per child, or use deployment hours • Register by Jan. 10
14	Registration Opens for Youth Sports • Parent Central • 785-239-9885 K-12th Conditioning • Free • Mar. 2-12 K-8th Soccer • \$45 • Mar. 16-May 9
16	Hearts Apart • 11am-12:30pm • SpareTime Interactive • 785-239-4366 Create a Valentine Day themed care package for a deployed Soldier
17	Snow Creek Trip • Snow Creek, Weston, MO • 785-239-5412 \$60 per person includes transportation, equipment and lift tickets. • Registration required
18	BOSS KC Zoo Trip • 7:30am • Kansas City, MO • 785-239-2677 Transportation provided • Wear civilian clothing. Bring ID card and money for food.
18	Iron Viking Challenge • 8am-Noon • Robinson Fitness Center • 785-239-2573 Battle Rig competition • \$20 advance • \$25 at the door • Medals given
18	Arts & Crafts Project • 11am-6pm • Hobby Studio • 785-239-9205 \$45 (Ages 14+) • Shadow Boxes (16x20) • Preregistration required
18	Cookies & Canvas • 5-6pm • Hobby Studio • 785-239-9205 \$10 • Must be 6 years or older • Price includes supplies, instruction and snack
25	Indoor Rock Climbing • 10am-Noon • Craig Fitness Center • 785-239-5412 \$15 per person • Must register by Jan. 23 at Outdoor Adventure & Travel Center
25	Arts & Crafts Project • 11am-6pm • Hobby Studio • 785-239-9205 \$30 (Ages 14+) • "Home Is Where The Army Sends Us" sign • Preregistration required
25	Virtual Tournament • 4pm • Warrior Zone • 785-240-6618 Join Team Riley and compete against other Warrior Zones across the Nation.
25	Snowed in at the Library Party! • 1-3pm • Post Library • 785-239-5305 Join us for a snowy good time! • Enjoy snowball punch, a craft, and snacks!

SPOTLIGHT ON ... *Family and MWR Employees of the Month*



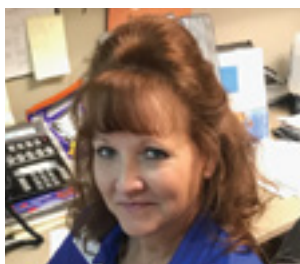
LYLE SALDAVIA

September Employee of the Month

Mr. Lyle Saldavia is a valued member of the 1st Division CDC team for his overall efforts at ensuring all aspects of the facility are running smoothly.

Lyle makes a daily effort to help parents carry items into the center, always greets parents and children, and works to make all staff smile daily.

Mr. Saldavia is an asset to the 1st Division CDC team as well as Child and Youth Services.



WENDY VALDEMAR

October Employee of the Month

Ms. Wendy Valdemar stepped up and successfully led a team of nine employees for a period of three weeks to gather, categorize, and distribute the contents of Warren Child Development Center that was vacated in preparation for a restoration and modernization project.

Ms. Valdemar's self-motivation, dedication, and efficiency shows her willingness to go above and beyond her assigned duties.



CHRIS GOODMILLER

November Employee of the Month

Ms. Chris Goodmiller comes to work every day ready to help with any situation and works to get a positive result regardless of the complexity of the task.

Chris consistently comes through creating new designs and completing new projects day in and day out and is a key support employee.

Ms. Goodmiller's hard work and dedication to duty has a positive reflection on the Garrison and Family and MWR.

PEDIATRIC URGENT CARE IS NOW OPEN!



1102 St. Mary's Road
Junction City, KS 66441

**Hours: Noon – 6 p.m.
Saturdays and Sundays**

Children's Mercy Junction City Urgent Care is open. Our Urgent Care Center is designed for pediatric patients up to their 18th birthday and specializes in illnesses and injuries that are not life threatening. We treat conditions such as earaches, fever, flu, skin rashes, stomach aches, sprains and minor cuts and burns.

Check in online with **Save My Spot**.
Visit childrensmercy.org/junctioncity.

FEBRUARY

CALENDAR OF ACTIVITIES

S	M	T	W	T	F	S
						01
02	03	04	05	06	07	08
09	10	11	12	13	14	15
16	17	18	19	20	21	22
23	24	25	26	27	28	29

Color indicates activity type

INFORMATIONAL ACTIVITY

RECREATIONAL ACTIVITY

SPORTING ACTIVITY

SPECIAL SERVICE OFFER

Reoccurring ACS Activities

Victory Welcome *(Newcomers In-processing)*

Wednesdays • 1-4:30pm • Location Varies

Get informed of local events and programs offered and participate in an information fair during the last hour with more than 40 area organizations on hand. Spouses are welcome and are highly encouraged to attend.

PCS Social

Wednesdays • 5-7:30pm • IHG Army Hotel

Stop by for a free meal and social event, and learn about the programs and services that provide you with support during your move.

Meet and Greet Playtime

Mondays • 10-11am • King Field House

Playgroup offers parents with young children (up to 36 months in age) a chance to get together, and children get the opportunity to build socialization skills through play.

Moms Together Playgroup

Wednesdays • 10-11:30am • ACS

Don't just survive, thrive! Meet other new moms during this informal social get-together. Open to Families with newborns to 24 months old.

Basic Money Management

Tuesdays • 9-11:30am • ACS

Learn how to better manage your money!

For a complete list of ACS activities, visit riley.armymwr.com or call 785-239-9435.

DAY	
01	Sip-n-See Candle Making • 6-9pm • Hobby Studio • 785-239-9205 \$30 plus \$1 per ounce of wine • Max is 2 glasses with no more than 3 oz/glass
01	Archery Tag Tournament • 2-5pm • Location TBD • 785-239-5412 \$35 per team (5-7 people) • Register by Jan. 30 at Outdoor Adventure & Travel Center
01	Parents' Night Out • 6-11pm • CYS Saturday-night child care! • 785-239-9885 Flat rate of \$25/child • CYS Saturday-night child care! • Register by Jan. 29
02	Warrior Zone Bowl Party • 11am-7pm • Warrior Zone • 785-240-6618 Gaming tournaments, football squares and more • VIP \$20 Advance • \$25 Day of
02	Virtual Tournament • 4pm • Warrior Zone • 785-240-6618 Join Team Riley and compete against other Warrior Zones across the Nation.
05,12,19,26	Strider Riders! Teach your Tot • 12-12:30pm, 12:45-1:15pm • Location TBD • 785-239-5412 \$5 per child • Parents are free • Ages 2-3:12-12:30pm, Ages 4-5:12:45-1:15pm
07	Trivia Night • 7pm • Riley's Community Center • 785-239-2807 \$5 per person • Ages 18+ • A prize awarded to winning team or individual
08	Parent Central Saturday Hours • 8:30am-1:30pm • 785-239-9885 Saturday service for CYS registration • Appointments available
08	BOSS Flint Hills Senior Home Visit • 9am • St. George, KS • 785-239-2677 BOSS program will visit and share fun events with the seniors living there
08	Winter Bounce Party • 10am-1pm • Equipment Checkout Center • 785-239-2363 \$5 per child (3+) • Parents are free • Bounce away those winter blues!
08	Dodgeball Tournament • 10am • King Field House • 785-239-2813 DoD ID holders ages 18+ • Free/active-duty, \$50/team • Register by Feb. 6
08	Love at the Library Party! • 1-3pm • Post Library • 785-239-5305 Don't you just love YOUR library? • We will have punch, a craft and snacks!
09,22,23	Lifeguard Training Classes • 9am-6pm • Long Fitness Pool • 785-239-4683 Certification Class 1 • Class meets each day
10	Registration Opens for Developmental Soccer • Parent Central • 785-239-9885 \$25 • Ages 3-5 • Season runs March 31-May 7
11	SFRG Child Care • 6:30-8:30pm • For SFRG meetings... or anything else! • 785-239-9885 \$10 per child, or use deployment hours • Register by Feb. 7
14	BOSS Love Sucks • 6:30-9pm • Warrior Zone • 785-239-2677 Activities for the single Soldier • Burn letters to exes on a stake at the bonfire
15	Sweetheart ATV Ride • 1-3pm • ATV Riding Area • 785-239-5412 \$45 per person • Register by February 13
15	BOSS Fort Riley Clean Up • 9am • Fort Riley, KS • 785-239-2677 BOSS program volunteers will clean up litter around post • Transportation provided
19	Oh! Oh Baby It's your day • 9am-Noon • ACS • 785-239-9435 Developmental assessments • Services to inspire developmental growth
19	Registration Opens for Youth Clubs • Parent Central • 785-239-9885 \$20 • Grades 1st-12th • Running & Tennis • Season runs April 6-May 16
22	Watercolor Painting • 11am-5pm • Hobby Studio • 785-239-9205 \$20 per person and includes supplies • Learn basic techniques, color theory
22	Movie Night "Angry Birds 2" • 6:30pm • Post Library • 785-239-5305 Enjoy a free movie with popcorn and juice
22	Boards & Brews • 6:30-9:30pm • Warrior Zone • 785-239-9205 \$25 per person • Make corn hole boards! • 18+ • Pre-registration required

DAY

28 **Alignment Service Class • 2pm • Automotive Skills Center • 785-239-9764**

Learn how to properly service, maintain and align your vehicle

29 **Silent Art Auction • 6:30-9:30pm • Riley's Community Center • 785-239-9205**

\$15 entry fee • Military prints will be auctioned • Alcohol provided

Ongoing **Engine Rebuild & Machine Shop • Automotive Skills Center • 785-239-9764**

7753 Apennines Dr. • Hours: Fri, Noon-8pm • Sat & Sun, 9am-5pm

Ongoing **Lap Swim • Long Fitness Center Training Pool • 785-239-4683**

M-F: 5-7:45am, 11am-1pm, 4:30-7pm • Closed on Federal & training holidays

Ongoing **Recreational Swim • Long Fitness Center Training Pool • 785-239-4683**

Sat and Sun, 1-4pm • Closed on Federal & training holidays



Like us on Facebook!



Search "Fort Riley MWR" to keep up with the latest news and events!



Equipment Checkout Center More than just campers!

1806 Buffalo Soldier Road
Camp Funston • 785.239.2363

CLOUD-COUNTY

Start Here

- Flexible 8 and 16 week classes
- Full service campus in Junction City
- Online & On Campus options
- Military Friendly
- Affordable tuition & transferable to K-State



CLOUD COUNTY COMMUNITY COLLEGE
Geary County Campus (Junction City)
www.cloud.edu

We're ready to help you!
Come see us at 631 Caroline Ave
or call us at 785.238.8010, ext. 750.

Visit the Fort Riley Education
Office for more information.

EXPLORE your OPTIONS with CLOUD!

MARCH

CALENDAR OF ACTIVITIES

S	M	T	W	T	F	S
01	02	03	04	05	06	07
08	09	10	11	12	13	14
15	16	17	18	19	20	21
22	23	24	25	26	27	28
29	30	31				

Color indicates activity type

INFORMATIONAL ACTIVITY

RECREATIONAL ACTIVITY

SPORTING ACTIVITY

SPECIAL SERVICE OFFER

SpareTime Interactive Entertainment

Play glow minigolf with the Family or practice up on your swing in batting cages. Want to hit the fairway or the turf, but it's too hot outside? Screen golf simulators and a multi-sport simulator will allow you to play year round. A giant video screen will be streaming sporting events. Enjoy the children's play area, or the full-service lounge with karaoke, a pool table and darts.

For a complete list of offers, call 785-239-4366 or stop by the SpareTime Interactive Entertainment, 7485 Normandy Dr.

Warrior Zone

Looking for something to do? No matter what day it might be, the Warrior Zone has you covered with Warrior Zone 365. We make sure Soldiers have at least one available opportunity for social recreation every day of the year. Activities include movie screenings in the Warrior Zone theater, tabletop gameday, pool tournaments, poker tournaments, Nintendo Wii gaming tournaments, and even an afternoon of Dungeons and Dragons. The Warrior Zone is open to guests ages 18 and older.

For a complete list of activities, call 785-240-6618 or stop by the Warrior Zone, 7867 Normandy Dr.

DAY	
07	BOSS Flint Hills Senior Home Visit • 9am • St. George, KS • 785-239-2677 BOSS program will visit and share fun events with the seniors living there
07	Army Strong Powerlifting • 9am-Noon • Craig Fitness Center • 785-239-5562 \$25 • Competition of bench press, squat and deadlift • Advance registration
07	Cajun Kickback • 6-8pm • Warrior Zone • 785-240-6618 Cajun food specials • Dominoes, corn hole, pool tournaments and prizes!
07	Parents' Night Out • 6-11pm • CYS Saturday-night child care! • 785-239-9885 Flat rate of \$25/child • CYS Saturday-night child care! • Register by Mar. 4
09-12	Strider Riders! Teach your Tot • 12-12:30pm, 12:45-1:30pm • Location TBD • 785-239-5412 \$5 per child • Parents are free • Ages 2-3:12-12:30pm, Ages 4-5:12:45-1:30pm
10-12	Youth Archery Camp • 10am-Noon • Equipment Checkout Center • 785-239-5412 \$50 per person (Ages 9-17) • Must register by Mar. 5 at Outdoor Adventure & Travel Center
10	SFRG Child Care • 6:30-8:30pm • For SFRG meetings... or anything else! • 785-239-9885 \$10 per child, or use deployment hours • Register by Mar. 6
14-15	March Madness 3v3 Tournament • 10am • Whitside Fitness Center • 785-239-2573 Open to DoD ID holders ages 18+ • \$50/team • Free for active duty
14	Parent Central Saturday Hours • 8:30am-1:30pm • 785-239-9885 Saturday service for CYS registration • Appointments available
14	BOSS Ronald McDonald House • 9am-2pm • Topeka, KS • 785-239-2677 Volunteers help maintain Ronald McDonald House • Bring money for food
14	St. Patrick's Day Party • 1-3pm • Post Library • 785-239-5305 Wear your green so you don't get pinched! • Green drink, a craft and snacks!
14	Button Mashers • 4pm • Warrior Zone • 785-240-6618 \$5 Admission • Must be 18+
20,21,22	Lifeguard Training Classes • 9am-6pm • Long Fitness Pool • 785-239-4683 Certification Class 2 • Class meets each day
21	Intro to ATV Riding • 1-3pm • ATV Riding Area • 785-239-5412 \$45 per person • Register by March 19
21	BOSS Fort Riley Clean Up • 9am • Fort Riley, KS • 785-239-2677 BOSS program volunteers will clean up litter around post • Transportation provided
24	Registration Opens for Youth Conditioning • Parent Central • 785-239-9885 Free • Ages 5-13 • Summer Sport Conditioning • Season runs May 4-May 14
24	Intramural Soccer League • Whitside Fitness Center • 785-239-5412 Free • Active Duty only • Season runs through April 16 • Register by March 18
24	Registration Opens for Player Pitch Softball • Parent Central • 785-239-9885 \$45 • Ages 9-13 coed or grades 3rd-12th girls only • Season runs May 11-July 18
27	Archery Tag Tournament • 2-5pm • Location TBD • 785-239-5412 \$35 per team (5-7 people) • Register by Mar. 25 at Outdoor Adventure & Travel Center
28	Movie Night "Toy Story 4" • 6:30pm • Post Library • 785-239-5305 Enjoy a free movie with popcorn and juice
31	Registration Opens for T-Ball, Coach/Machine Pitch • Parent Central • 785-239-9885 \$45 • Ages 5-8, Grades 1st-2nd • Season runs May 18-July 2
31	Registration Opens for Developmental Sports • Parent Central • 785-239-9885 \$25 • Ages 3-7 • T-Ball or Lacrosse • Season runs May 18-June 25
Ongoing	Lap Swim • Long Fitness Center Training Pool • 785-239-4683 M-F: 5-7:45am, 11am-1pm, 4:30-7pm • Closed on Federal & training holidays



Manhattan Arts Center

Ask about our
Military Discounts!

Theatre Season Sponsor: **CivicPlus**



Men on Boats (dramedy)

Auditions: January 12 & 13, 7-9pm (Sun & Mon)
Performances: Feb 21-23 & Feb 28-Mar 1, 2020
By Jaclyn Backhaus
Directed by LaVonne Canfield
Gold Sponsors: **Lew & Enid Cocke**



The Sound of Music (musical)

Music by Richard Rodgers
Lyrics by Oscar Hammerstein II
Book by Howard Lindsay & Russel Crouse suggested by
"The Trapp Family Singers" by Maria Augusta Trapp
Directed by Penny Cullers
Auditions: Oct 20 & 21, 7-9pm (Sun & Mon)
Performances: Dec 6-8 & Dec 13-15, 2019
Platinum Sponsors: **Debbie Nuss & Brad Fenwick**



Calan* Tue, Mar 17, 7:30pm

Special St. Patrick's Day 2020 concert

Plus 2 more shows in Spring 2020—TBA!

BirdHouse Season Sponsors:
Brian Niehoff & Usha Reddi

Check out our programs for all ages!

Art • Music • Drama • Clay • MACademy Youth Theatre
and Community School for the Performing Arts
Education Season Sponsors: **Keating & Associates, Inc**



www.manhattanarts.org

1520 Poyntz Ave, Manhattan 785-537-4420



C.L. Hoover
OPERA HOUSE
JUNCTION CITY, KS

135 W 7th St,
Junction City, KS 66441
www.jcoperahouse.org
785-236-3906



FEBRUARY 22nd



MARCH 13th

Lucas Bohn
JANUARY 11th



MARCH 7th



APRIL 4th



PROUDLY OFFERING MILITARY DISCOUNTS
FAMILY-FRIENDLY SHOWS • LIVE ENTERTAINMENT • HISTORIC TOURS

Discover
Your

Wild Side

at **Rolling Hills Zoo**

- Wildlife Museum
- Special Events
- Keeper Encounters
- Tram Rides
- Restaurant
- Gift Shops
- And So Much More!



MILITARY DISCOUNT
All active & retired military receive a 15% discount
every day! Get your tickets at the ITR!

SPRING BREAK:
GO WILD
MARCH 7 - 15

Each day is a new adventure with
animal & Keeper Encounters, tram
rides, featured animals & MORE!



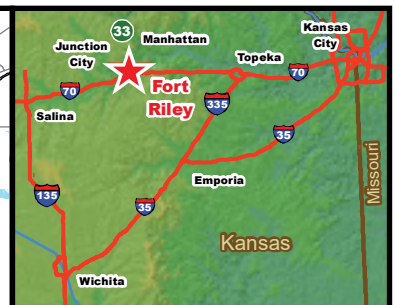
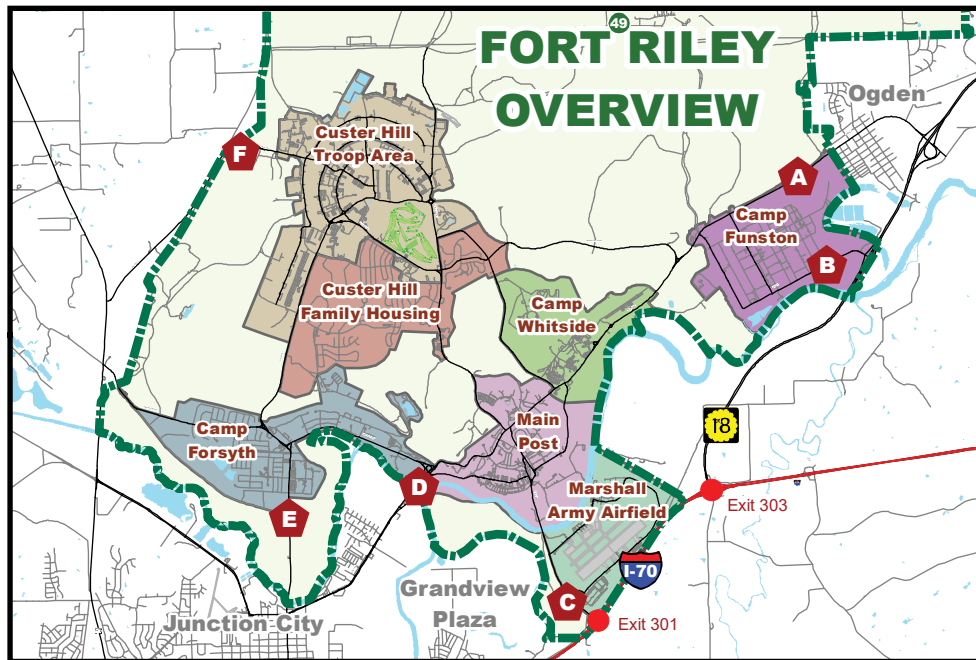
Open Daily • 6 mi. W. of Salina • 785-827-9488



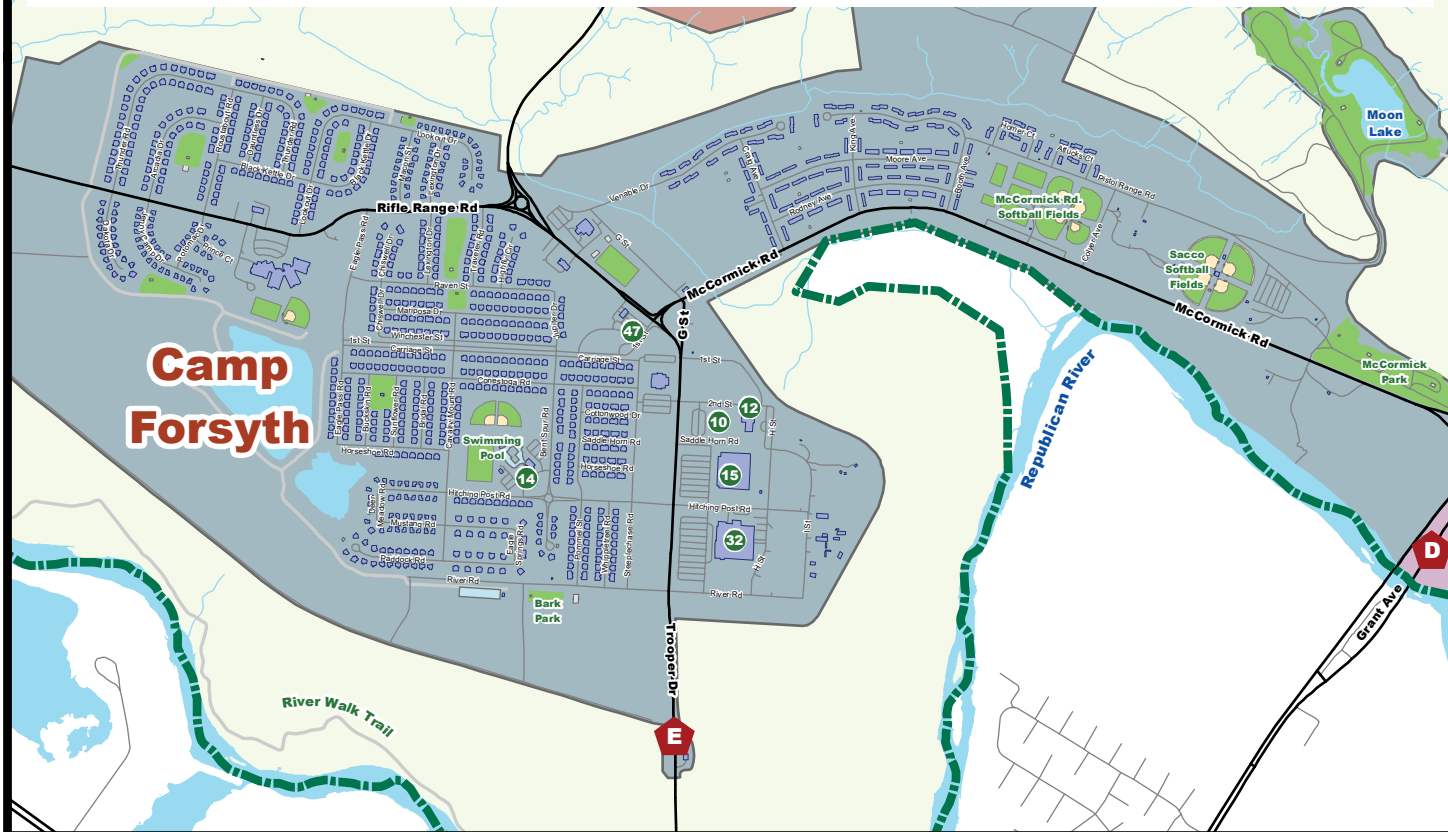
rollinghillszoo.org

Annual Corporate Sponsors:



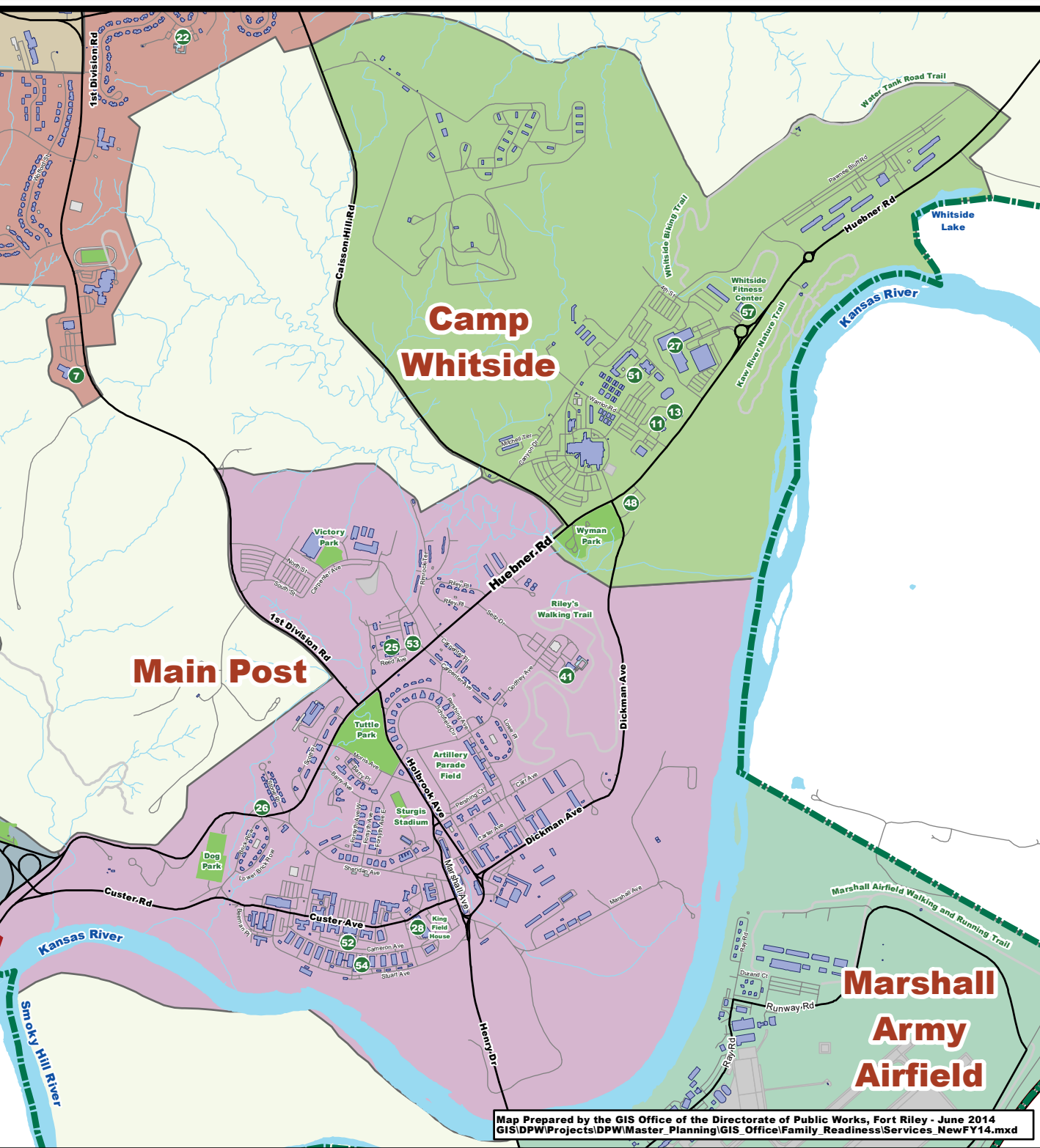


Letter	Gate
A	Ogden Gate
B	12th St. Gate
C	Henry Dr. Gate Visitor Control Center
D	Grant Ave. Gate
E	Trooper Dr. Gate
F	Estes Rd. Gate



Fort Riley Family

- | | | | |
|---|---------------------------------------|--|--|
| 1 Army Community Service (ACS) | 8 Warren CDC | 15 Commissary | 22 Ellis Heights Neighborhood Center |
| 2 Hobby Studio/USO | 9 Warren East CDC | 16 Consolidated Troop Medical Clinic | 23 Eyster Indoor Pool |
| 3 Automotive Skills Center | 10 Forsyth CDC | 17 Equipment Checkout Center | 24 Farrelly Health Clinic |
| 4 B.O.S.S.-Better Opportunities for Single Soldiers | 11 Whittside CDC | 18 Craig Fitness Center | 25 Headquarters: Family and MWR |
| 5 Caldwell Clinic | 12 Forsyth School-Age Center | 19 Spacetime Interactive Entertainment | 26 Historic Main Post Community Center |
| 6 Candlewood Suites Hotel | 13 Whittside North CDC | 20 Outdoor Adventure & Travel Center | 27 Irwin Army Community Hospital |
| 7 1st Division CDC | 14 Colyer-Forsyth Neighborhood Center | 21 Custer Hill Aquatic Park | 28 King Field House (Fitness Center) |

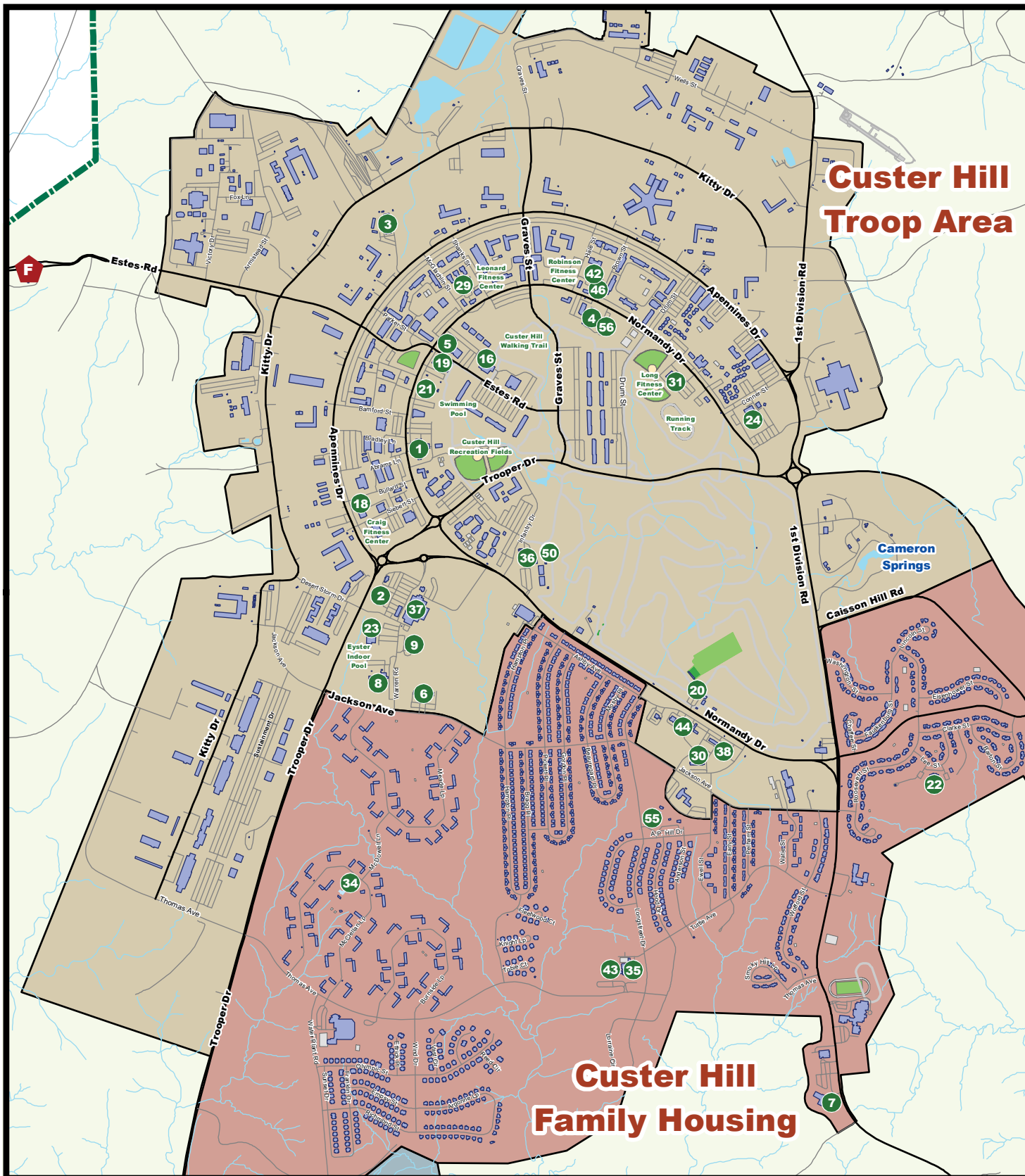


Map Prepared by the GIS Office of the Directorate of Public Works, Fort Riley - June 2014
GIS\DPW\Projects\DPW\Master_Planning\GIS_Office\Family_Readiness\Services_NewFY14.mxd

Services Map

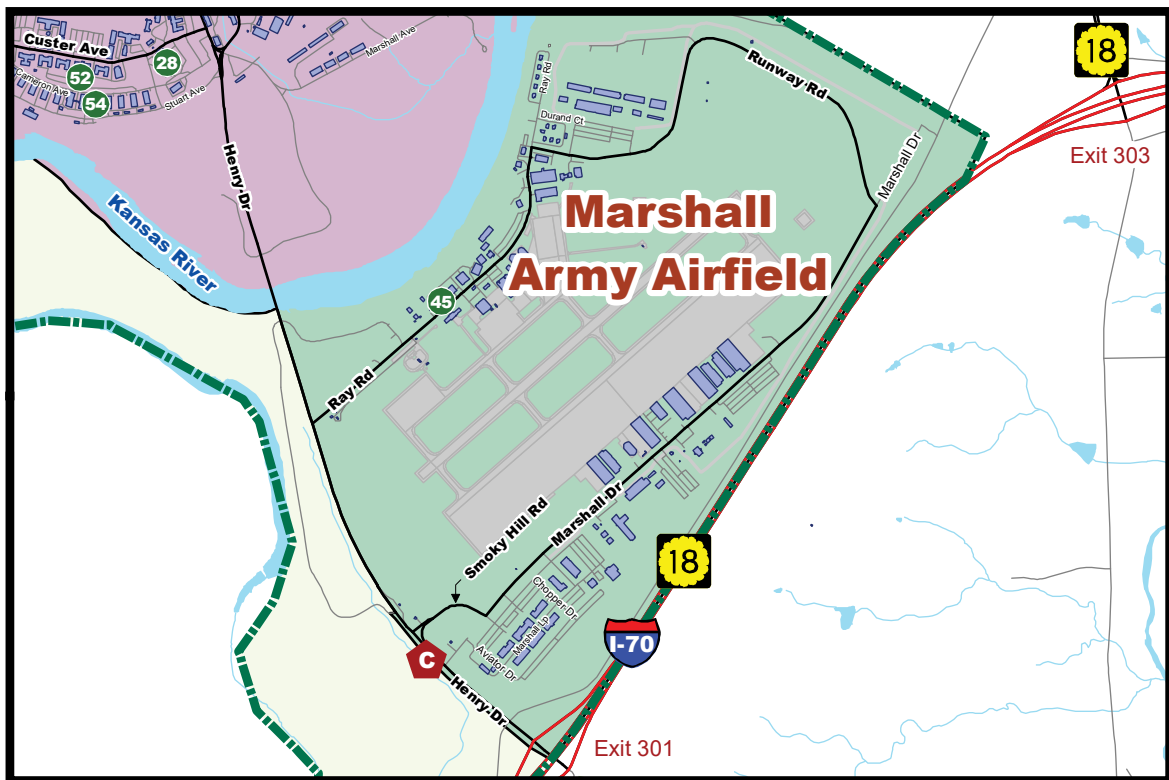
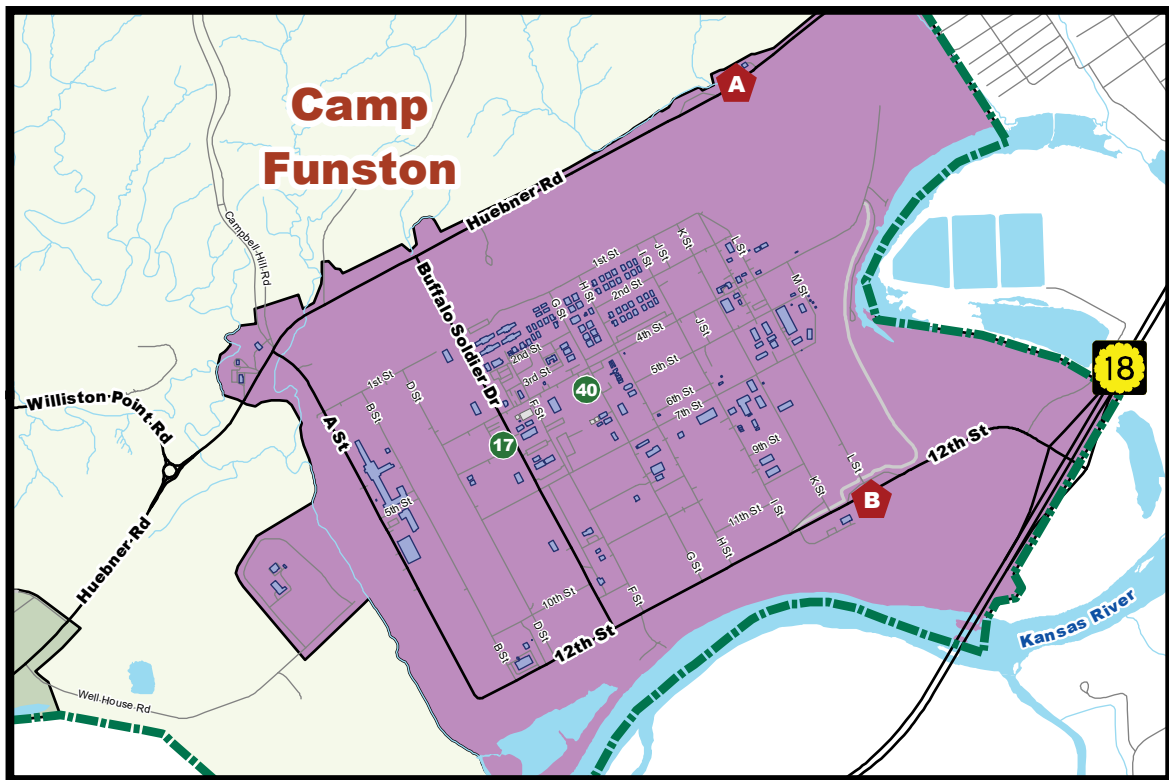
29 Leonard Fitness Center	36 CYS Parent Central	44 Custer Hill Express	51 Soldier and Family Assistance Center
30 Library	37 Big Red 1 Express/Mini-Mall	45 Express Troop Store #1	52 Soldier Arrival/Sign-In
31 Long Fitness Center	38 Post Office	46 Express #3/Domino's Pizza	53 Survivor Outreach Services
32 Main Post Exchange	40 Recycling Center	47 Forsyth Express	54 Thrift Store
33 Marina (Milford Lake)	41 Riley's Community Center	48 Main Post Express/Firestone/Domino's	55 Warner Peterson Neighborhood Center
34 McClellan Place Neighborhood Center	42 Robinson Fitness Center	49 Skeet and Trap Range	56 Warrior Zone
35 Custer Hill Youth Center	43 Custer Hill School-Age Center	50 Skies Unlimited Instructional Program	57 Whitside Fitness Center

Custer Hill Troop Area



Custer Hill Family Housing

- | | | | |
|---|---------------------------------------|--|--|
| 1 Army Community Service (ACS) | 8 Warren CDC | 15 Commissary | 22 Ellis Heights Neighborhood Center |
| 2 Hobby Studio/USO | 9 Warren East CDC | 16 Consolidated Troop Medical Clinic | 23 Eyster Indoor Pool |
| 3 Automotive Skills Center | 10 Forsyth CDC | 17 Equipment Checkout Center | 24 Farrelly Health Clinic |
| 4 B.O.S.S.-Better Opportunities for Single Soldiers | 11 Whitside CDC | 18 Craig Fitness Center | 25 Headquarters: Family and MWR |
| 5 Caldwell Clinic | 12 Forsyth School-Age Center | 19 Sparetime Interactive Entertainment | 26 Historic Main Post Community Center |
| 6 Candlewood Suites Hotel | 13 Whitside North CDC | 20 Outdoor Adventure & Travel Center | 27 Irwin Army Community Hospital |
| 7 1st Division CDC | 14 Colyer-Forsyth Neighborhood Center | 21 Custer Hill Aquatic Park | 28 King Field House (Fitness Center) |



- | | | | |
|--|----------------------------------|--|---|
| 29 Leonard Fitness Center | 36 CYS Parent Central | 44 Custer Hill Express | 51 Soldier and Family Assistance Center |
| 30 Library | 37 Big Red 1 Express/Mini-Mall | 45 Express Troop Store #1 | 52 Soldier Arrival/Sign-In |
| 31 Long Fitness Center | 38 Post Office | 46 Express #3/Domino's Pizza | 53 Survivor Outreach Services |
| 32 Main Post Exchange | 40 Recycling Center | 47 Forsyth Express | 54 Thrift Store |
| 33 Marina (Milford Lake) | 41 Riley's Community Center | 48 Main Post Express/Firestone/Domino's | 55 Warner Peterson Neighborhood Center |
| 34 McClellan Place Neighborhood Center | 42 Robinson Fitness Center | 49 Skeet and Trap Range | 56 Warrior Zone |
| 35 Custer Hill Youth Center | 43 Custer Hill School-Age Center | 50 Skies Unlimited Instructional Program | 57 Whitside Fitness Center |

Army Community Service

ARMY COMMUNITY SERVICE	7264 NORMANDY DRIVE	785-239-9435
Monday-Thursday, 8am-5pm • Friday, 8am-4pm		
- 24/7 Victim Advocate Emergency		785-307-1373
- Employment Readiness		785-239-9435
- Family Advocacy		785-239-9435
- Financial Services/AER		785-239-9435
- Military Family Life Consultants		785-239-9435
- Military Family Life After Hours		785-221-9483
- Mobilization & Personal Readiness		785-239-9435
- Parent Support/EFMP		785-239-9435
- Relocation Program		785-239-9435
- Volunteer Programs/AFAP/AFTB		785-239-9435
- Survivor Outreach Services		785-239-0630
- Survivor Outreach Services After Hours		785-221-8595
SOLDIER & FAMILY ASSISTANCE CENTER	674 WARRIOR ROAD	785-239-8430
Monday-Friday, 8am-5pm		

Child + Youth Services

PARENT CENTRAL	6620 NORMANDY DRIVE	785-239-9885
Monday-Friday, 8am-5pm • Appointments available		
- Outreach Services		785-239-9885
- Family Child Care		785-239-4313
- School Liaison Officer		785-240-3261
- SKIES		785-240-2822
- Youth Sports & Fitness		785-239-9223
1ST DIVISION CDC	4012 1ST DIVISION ROAD	785-239-9011
CUSTER HILL SCHOOL AGE CENTER	5810 THOMAS AVENUE	785-239-9220
CUSTER HILL YOUTH CENTER	5800 THOMAS AVENUE	785-239-9222
FORSYTH CDC	2410 SADDLEHORN ROAD	785-239-4846
FORSYTH EAST SCHOOL AGE CENTER	2420 H STREET	785-240-5820
WARREN CDC (CLOSED FOR RENOVATIONS)	6950 WARREN ROAD	785-239-9935
WARREN EAST CDC	6981 WARREN ROAD	785-240-0822
WHITSIDE CDC	676 WARRIOR ROAD	785-239-4978
WHITSIDE NORTH CDC (hourly care)	678 WARRIOR ROAD	785-239-6739

Recreational Services

ANIMAL SHELTER AND ADOPTION CENTER	224 CUSTER AVENUE	785-239-6183
Monday, Tuesday, Thursday, Friday, 10am-6pm • Saturday, 10am-3pm • Closed Wednesday, Sunday + federal holidays		
AUTOMOTIVE SKILLS CENTER & CAR WASH	7753 APENNINES DRIVE	785-239-9764
Friday, Noon-8pm • Saturday, Sunday + training holidays, 9am-5pm		
B.O.S.S.	7867 NORMANDY DRIVE	785-239-2677
Monday-Friday, 9am-4pm • Closed Saturday, Sunday, federal holidays + training holidays		
EQUIPMENT CHECKOUT CENTER	1806 BUFFALO SOLDIER ROAD	785-239-2363
Monday-Friday, 10am-5pm • Closed Saturday, Sunday, and federal holidays		

FORT RILEY POST LIBRARY	5306 HOOD DRIVE	785-239-5305
Tuesday-Saturday, 11am-6pm • Sunday, Noon-5pm		
FORT RILEY SKEET & TRAP	RANGE 34 VINTON SCHOOL ROAD	785-239-5412
Open during the "Open Trap & Skeet" event dates and times		
HOBBY STUDIO	6918 WARREN ROAD	785-239-9205
Thursday-Saturday, 11am-6pm • Tuesday-Wednesday by reservation		
LEISURE TRAVEL SERVICES	5202 NORMANDY DRIVE	785-239-5614
Monday-Friday, 10am-5pm		
OUTDOOR ADVENTURE AND TRAVEL CENTER	5202 NORMANDY DRIVE	785-239-5412
Monday-Friday, 10am-5pm		
RILEY'S COMMUNITY CENTER	446 SEITZ DRIVE	785-784-1000
Tuesday + Wednesday, 9am-6pm • Thursday + Friday, 11am-8pm • Saturday, Noon-7pm • Sunday + Monday, Closed		
SPARETIME INTERACTIVE ENTERTAINMENT	7485 NORMANDY DRIVE	785-239-4366
Wednesday + Thursday, 11am-9pm • Friday + Saturday, 11am-Midnight • Sunday, Noon-6pm		
WARRIOR ZONE	7867 NORMANDY DRIVE	785-240-6618
Monday-Thursday, 8am-9pm • Friday-Sunday, 11am-11pm		

Sports, Fitness + Aquatics

KING FIELD HOUSE FITNESS CENTER	202 CUSTER AVENUE	785-239-3868
Monday-Friday, 5am-9pm • Saturday, Sunday, federal holidays + training holidays, 8am-8pm		
CRAIG FITNESS CENTER	7024 APENNINES DRIVE	785-239-5562
Open 24 hours <i>(Facility first-time users must register between 9am-6pm on non-holiday weekdays for after-hours access)</i>		
LEONARD FITNESS CENTER	7632 MCGLACHLIN STREET	785-239-5771
Monday-Friday, 5am-8pm • Saturday, Sunday, holidays + training holidays, 10am-5pm		
LONG FITNESS CENTER	8069 NORMANDY DRIVE	785-239-4683
Monday-Friday, 5am-8pm • training holidays, 8am-4pm • Closed Saturday, Sunday + federal holidays		
LONG TRAINING POOL	8069 NORMANDY DRIVE	
Lap Swim: Monday-Friday, 5-7:45am, 11am-1pm + 4:30-7pm • Rec Swim: Saturday & Sunday, 1-4pm • Closed federal holidays + training holidays		
ROBINSON FITNESS CENTER	7832 HALE STREET	785-239-4480
Monday-Friday, 5am-8pm • training holidays, Noon-7pm • Closed Saturday, Sunday + federal holidays		
WHITSIDE FITNESS CENTER	684 HUEBNER ROAD	785-239-2573
Open 24 hours <i>(Facility first-time users must register between 9am-6pm on non-holiday weekdays for after-hours access)</i>		
- Fitness Office		785-239-2813
- Intramural Sports Office		785-239-2813
CUSTER HILL AQUATIC PARK	7465 NORMANDY DRIVE	785-239-5860
Closed for the season		
EYSTER INDOOR POOL	6940 WARREN ROAD	785-239-4854
Closed for renovations, reopening in 2020		



facebook.com/
rileymwr



@RileyMWR



@RileyMWR

Always on. Always there.

Earn a degree online

- Expand your knowledge, training and skills
- Advance your career or prepare for a new one
- Pursue goals while working around your family and job responsibilities

Online credit programs from Kansas State University Global Campus include:

- Nine Bachelor's degrees
- 29 Graduate degrees
- 29 Certificate programs
- Two Minors

10 training programs in legal studies

Evening College

- On-campus courses after 5:30 p.m. and in eight-week and 16-week sessions

Daytime courses

- Located on the Manhattan and Polytechnic (Salina) campuses

Airframe and powerplant certification (FAA) review courses

- Offered at Fort Riley



VISIT global.k-state.edu/military

KANSAS STATE
UNIVERSITY

Global Campus



NO STONE UNTURNED

THERAPEUTIC LEARNING CENTER

No Stone Unturned Therapeutic Learning Center provides a multidisciplinary and team-based approach to pediatric therapy services for Manhattan, Fort Riley and surrounding areas.

No Stone Unturned TLC offers pediatric Occupational Therapy, Physical Therapy, Speech Therapy, Applied Behavioral Analysis Therapy (ABA) and Autism Diagnostic Testing with our partner facility, Katie's Way.

Great news! We have added more staff in order to meet the needs of our community!



**We
accept
TRICARE!**