

The Guide



SUMMER

July August September 2020



riley.armymwr.com
facebook.com/rileymwr

A complete guide of activities for Fort Riley Family and MWR



Manhattan
Arts Center

Ask about our
Military Discounts!

Theatre Season Sponsor: **CivicPlus**

Three siblings. One hot mess.

Vanya
and **Sonia**
and **Masha**
and **Spike**

**Vanya and Sonia
and Masha and Spike**
By Christopher Durang
Summer comedy
Performances:
Jul 31 & Aug 1, Aug 7 & 8
Location TBA
Directed by Donald Davis
Some strong language.

Bring your whole crew for live theatre, live
music, galleries, classes, and Community
School for the Performing Arts.



www.manhattanarts.org

1520 Poyntz Ave, Manhattan 785-537-4420



Taking precautions daily to keep you safe!

AUTOMOTIVE SKILLS CENTER & CAR WASH



PROVIDED SERVICES:

Towing | Alignments | Dyno | Oil Changes
New drive on lifts | New tool boxes | Friendly staff



7753 APENNINES DRIVE | 785.239.9764
For current hours go to riley.armymwr.com



**PROUDLY
SUPPORTING
THOSE WHO
SERVE AND
THEIR FAMILIES!**

**SEE US FOR SPECIAL
MILITARY PRICING!**

Briggs
AUTO GROUP

Paid advertising does not imply endorsement by U.S. Army





FAMILY AND MWR HEADQUARTERS

500 Huebner Road
Fort Riley, KS 66442
785-239-3467

DIRECTOR OF FAMILY AND MWR

Tod A. Scalf

This publication is produced by
Family and MWR Marketing:

KEN ROYNON
CHRIS DUMLER
HOPE JACKSON
CHRIS GOODMILLER

To advertise in this quarterly publication, contact
Ken Roynon at 785-239-1107.

PAGE

05

• **ONLINE ACTIVITIES**

06

• **FORT RILEY TRAILS**

11

• **CALENDAR**

12

• **MAP**

14

• **DIRECTORY**

ADVERTISER

PAGE

Manhattan Arts Center

02

Briggs

02

Cloud County Community College

07

Rolling Hills Zoo

09

Council Grove

10

KSU Global Campus

16

CMU

16

The Family and MWR Guide is an authorized, official quarterly magazine for Family and Morale, Welfare and Recreation activities within Fort Riley. Contents are not necessarily the official views of or endorsed by the U.S. Government, the Department of Defense, or the Fort Riley Command. The appearance of advertising in this publication does not constitute endorsement by the Department of the Army or the Fort Riley Morale, Welfare, and Recreation Fund. Everything advertised shall be made available for purchase, use or patronage without regard to race, color, religion, sex, national origin, age, marital status, physical handicap, political affiliation, or any other non-merit factor on the purchaser, user or patron. If a violation or rejection of this equal opportunity is confirmed, Family and MWR shall refuse to accept advertising from that source until the violation is corrected. The information in this issue is current at time of publication.

Activities and events are subject to change. For confirmation, please call the host facility or program.



We're Open!

PATRONS MUST:

- MAINTAIN PROPER PHYSICAL DISTANCING
- WEAR MASKS
- USE HAND SANITIZING STATIONS

Safe activities for the entire family!

SpareTime

Interactive Entertainment

7485 Normandy Drive | 785.239.4366

For current hours go to riley.armymwr.com



WEEKLY HYDRATION CHALLENGE

Print and simply cross off one of the glasses of water for each 8oz. cup you drink.
Print a new chart weekly to track your progress.

	1	2	3	4	5	6	7	8	9	10
DAY 1										
DAY 2										
DAY 3										
DAY 4										

FITNESS EQUIPMENT CHECKOUT PROGRAM

TRIVIA

NAME GAME

Choose the name of a person, place, or thing each day of the month.
Spell out the word & complete the activity associated with each letter.

A jump up & down 10 times	N pick up a ball without using your hands
B spin around in a circle 5 times	O walk backwards 50 steps & skip back
C hop on one foot 5 times	P walk sideways 20 steps & hop back
D run to the nearest door & run back	Q crawl like a crab for a count of 10
E walk like a bear for a count of 5	R walk like a bear for a count of 5
F complete 3 cartwheels	S bend down & touch your toes 20 times

Explore opportunities for fun at home, available online at riley.armymwr.com courtesy of local Fort Riley MWR programs and online resources.

INSIDE WITH MWR



ACTIVITIES & IDEAS TO KEEP YOUR BODY AND MIND FIT AT HOME

GO TO: RILEY.ARMYMWR.COM OR SCAN:



▼ Moon Lake Trail

MOON LAKE TRAIL



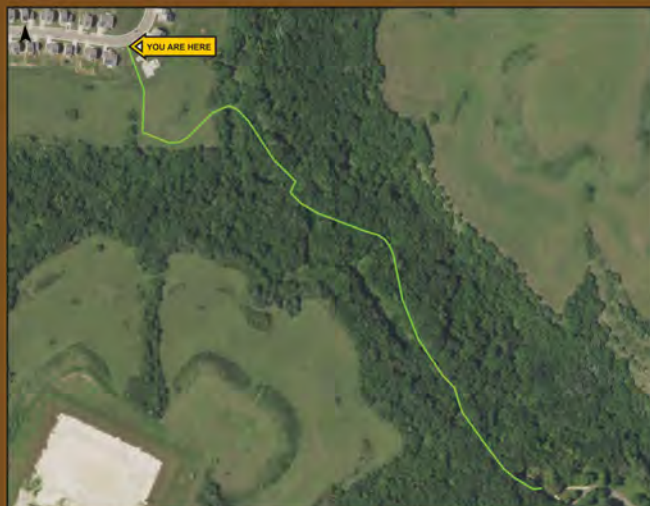
FORT RILEY TRAIL COLLECTION

Distance: .58 miles

Path Type: Gravel



The Moon Lake Trail was extended with funds received by Fort Riley for winning the 2019 Bronze Award in the Army Communities of Excellence program. The trail provides a relaxing, enjoyable and easy access walking path to the Moon Lake Park from one of the largest housing areas on Fort Riley. This area has always been teeming with local wildlife where Soldiers and their Families can take a moment out of their busy lives to venture out onto a safe, enjoyable, not so beaten path. Moon Lake Park provides a serene place to relax in the shade. Listen to the sound of the birds as you make your way down to the lake to have a picnic, play at the park or go fishing.



TRAIL GUIDE



riley.armymwr.com



#FitFirst



► Custer Hill Trail

► Gov Harvey Canyon Trail

► 1st Division Rd Trail



WE'RE IN THIS



IT'S NEVER
BEEN SMARTER
TO STAY CLOSE
TO HOME

- Flexible 8 and 16 week classes
- Full service campus in Junction City
- Online & On Campus options
- Affordable tuition & transferable to K-State



CLOUD COUNTY COMMUNITY COLLEGE
Geary County Campus (Junction City)
www.cloud.edu

We're ready to help you!
Call us at 785.238.8010, ext. 750.
Visit the Fort Riley Education Office
for more information. Advertising does
not imply U.S. Army endorsement.

CLOUD COUNTY
Stay Close. Go Far.

NOW ENROLLING for Fall!!

READY FOR A HIGH ADVENTURE?



The Adventure Park offers amazing recreational
opportunities right here on Fort Riley!



Adventure Park Elements

- | | | |
|-----------------------|----------------------|--------------------|
| > High Ropes Course | > Challenge Course | > Hatchet Throwing |
| > Zipline | > Paintball Facility | > Putting Green |
| > Family Ropes Course | > Archery Range | > Disk & Foot Golf |

riley.armymwr.com | 785.239.5412 | 5202 Normandy Drive

PATRONS MUST:

- MAINTAIN PROPER PHYSICAL DISTANCING
- WEAR MASKS
- USE HAND SANITIZING STATIONS



Measures are being taken to ensure safe, Family fun!

CHECK EVENT DETAILS FOR PATRON SAFETY MEASURES TO FOLLOW



OUTDOOR recreation CENTER Programs



Visit riley.armymwr.com for a list of
available outdoor recreational programs
OUTDOOR ADVENTURE AND TRAVEL CENTER
5202 NORMANDY DRIVE, FORT RILEY, KS | 785-239-5412





LOCATED AT THE OUTDOOR ADVENTURE AND TRAVEL CENTER 7

BELAY CAFE



We're open

PATRONS MUST:

- MAINTAIN PROPER PHYSICAL DISTANCING
- WEAR MASKS
- USE HAND SANITIZING STATIONS

Following safety precautions to keep friends and Families safe.

FOR CURRENT HOURS GO TO RILEY.ARMYMWR.COM

5202 NORMANDY DRIVE | FORT RILEY, KS | 785.239.5412



Scheduled cleaning in place for safe checkouts

Equipment Checkout Center More than just campers!

**1806 Buffalo Soldier Road
Camp Funston • 785.239.2363**

Discover Your *Wild Side* at **Rolling Hills Zoo**

Kid's Country • Nature Playground
Overlook Restaurant Outdoor Dining
Over 120 Amazing Animals
Waiting to See YOU!

**For Rolling Hills Zoo's Re-opening Guidelines
go to: rollinghillszoo.org**

MILITARY DISCOUNT

All active & retired military receive a 15% discount every day! Get your tickets at the ITR!

Annual Corporate Sponsors:



Spend the Night & Explore Salina

Open Daily • 6 mi. W. of Salina • 785-827-9488



rollinghillszoo.org



WE'RE OPEN! WE'LL PROVIDE THE ENTERTAINMENT, FUN, FOOD, AND MOST IMPORTANTLY THE CLEAN UP.

PATRONS MUST: MAINTAIN PROPER PHYSICAL DISTANCING | WEAR MASKS | USE HAND SANITIZING STATIONS



WARRIOR ZONE

FEATURES:

- Free WiFi,
PlayStation 4, Wii U,
Xbox One gaming consoles,
Alienware gaming PCs,
CAC-enabled computers
and netbooks
- Coin-operated arcade games,
Foosball tables,
Ping Pong tables,
Outdoor patio,
Fire pit,
Outdoor basketball court

7867 NORMANDY DRIVE | 785.240.6618 | VISIT RILEY.ARMYMWR.COM FOR CURRENT HOURS



a great get-away

JUST 45 MINUTES FROM FORT RILEY

HISTORY • SHOPPING •
DINING • HIKING TRAILS •
& BOAT RENTALS AVAILABLE •
MUCH MORE FAMILY FUN



COUNCIL GROVE/MORRIS COUNTY CHAMBER OF COMMERCE & TOURISM
WWW.COUNCILGROVE.COM • 620-767-5413

**TEAM BUILDING • READINESS • LEADERSHIP
UNIT COHESION • RE-INTEGRATION**

**WARRIOR
ADVENTURE
QUEST**



Warrior Adventure Quest is now open to platoon-sized elements in ANY phase of Sustained Readiness! There is no cost to the unit for program participation.

INFORMATION: 785.239.5412 OR 785.239.2364

CALENDAR OF ACTIVITIES

JULY 25 35th Annual 10-5-2 Prairie Run • 7am • King Field House • 785-239-2573

\$15 advanced registration through July 7, \$20 through on site registration July 25

AUGUST 08 High Ropes Obstacle Course • 9-11am • Outdoor Adventure Park • 785-239-5412

\$15 per person • 20 person max • Register by August 06

AUGUST 22 Regional 3-D Archery Tournament • 9am • Outdoor Adventure Park • 785-239-5412

\$35-\$55 per person • Register by August 21, Noon

AUGUST 29 Riley's Rascal Derby • 9am-4pm • Artillery Parade Field • 785-239-2807

Free • 2nd annual Soap Box Derby • Build a gravity-powered car and race others

Go to riley.armymwr.com to get the latest updates for MWR activities.

SEPTEMBER IS MONTH OF THE MILITARY CHILD (MOMC)!

SEPTEMBER TBD MOMC Kidsfest • TBD • Riley's Community Center • 785-239-9885

Free fun, snacks, information and activities for military Families

SEPTEMBER TBD MOMC Parade • TBD • Artillery Parade Field • 785-239-9885

Parade starts at Artillery Parade Field and ends at the Old Trooper Statue

SEPTEMBER TBD MOMC Pancake Party • TBD • Custer Hill School Age Center • 785-239-9885

Free pancake breakfast • Board games, photo booth, pancake decorating and more!

Color indicates activity type

INFORMATIONAL ACTIVITY

SPORTING ACTIVITY

RECREATIONAL ACTIVITY

SPECIAL SERVICE OFFER



Our employees are taking every precaution to ensure our facilities are clean and safe for patrons to come and have fun.

JULY

S	M	T	W	T	F	S
			01	02	03	04
05	06	07	08	09	10	11
12	13	14	15	16	17	18
19	20	21	22	23	24	25
26	27	28	29	30	31	

AUGUST

S	M	T	W	T	F	S
						01
02	03	04	05	06	07	08
09	10	11	12	13	14	15
16	17	18	19	20	21	22
23	24	25	26	27	28	29
30	31					

SEPTEMBER

S	M	T	W	T	F	S
		01	02	03	04	05
06	07	08	09	10	11	12
13	14	15	16	17	18	19
20	21	22	23	24	25	26
27	28	29	30			

**WARRIOR
ZONE**

**WE ARE OPEN FOR
DINE IN AND TAKEOUT**



**FOR PICK UP, CALL AHEAD
785-240-6616**

7867 NORMANDY DRIVE • RILEY.ARMYMWR.COM

New Children and Adult Classes Available



PATRONS MUST:

MAINTAIN PROPER PHYSICAL DISTANCING,
WEAR MASKS and USE HAND SANITIZING STATIONS

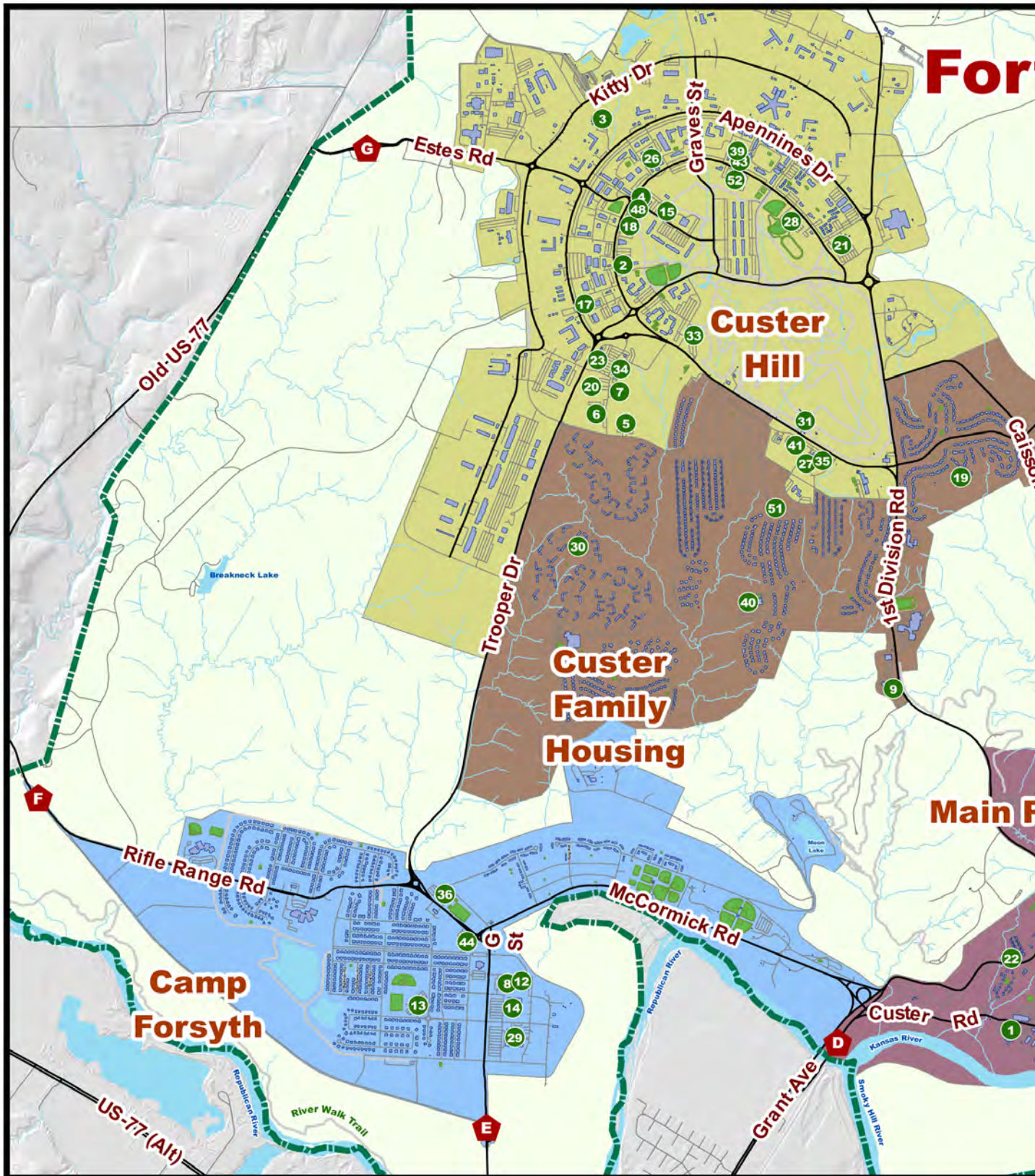
**Precautions being met for a clean and
safe environment for all to be creative**

785-239-9205

6918 TROOPER DRIVE

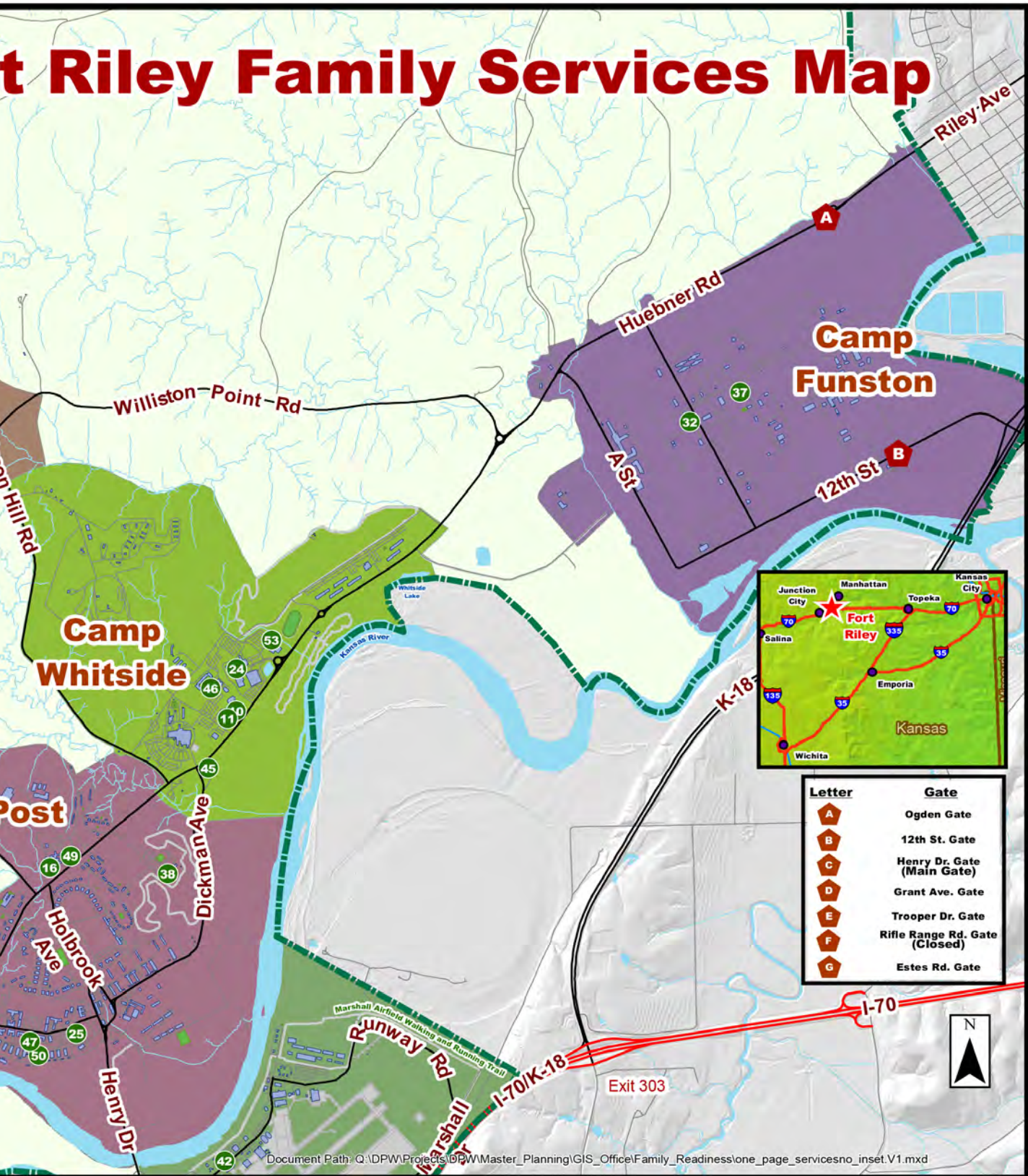
FOR CURRENT HOURS GO TO RILEY.ARMYMWR.COM





- | | | | |
|--------------------------------------|---------------------------------------|--------------------------------------|--|
| 1 Animal Shelter and Adoption Center | 8 Child Development Center | 15 Consolidated Troop Medical Clinic | 22 Historic Main Post Community Center |
| 2 Army Community Services (ACS) | 9 Child Development Center | 16 Family and MWR Headquarters | 23 Hobby Studio / USO |
| 3 Automotive Skills Center | 10 Child Development Center | 17 Craig Fitness Center | 24 Irwin Army Community Hospital |
| 4 Caldwell Clinic | 11 Child Development Center | 18 Custer Hill Aquatic Park | 25 King Field House |
| 5 Candlewood Suites Hotel | 12 Youth Center | 19 Ellis Heights Neighborhood Center | 26 Leonard Fitness Center |
| 6 Child Development Center | 13 Colyer-Forsyth Neighborhood Center | 20 Eyster Indoor Pool | 27 Library |
| 7 Child Development Center | 14 Commissary | 21 Farrelly Health Clinic | 28 Long Fitness Center |

Fort Riley Family Services Map



- | | | | |
|--|-------------------------------------|---|--|
| 29 Main Post Exchange | 36 Future Library | 43 Shoppette | 50 Thrift Store |
| 30 McClellan Place Neighborhood Center | 37 Recycling Center | 44 Shoppette / Gas Station | 51 Warner Peterson Neighborhood Center |
| 31 Outdoor Adventure and Travel Center | 38 Riley's Community Center | 45 Shoppette / Gas Station | 52 Warrior Zone / B.O.S.S. |
| 32 Equipment Checkout Center | 39 Robinson Fitness Center | 46 Soldier and Family Assistance Center | 53 Whiteside Fitness Center |
| 33 Parent Central | 40 School Age Center / Youth Center | 47 Soldier Arrival/Sign-In | |
| 34 Post Exchange, Minimall | 41 Shoppette | 48 SpareTime Interactive Entertainment | |
| 35 Post Office | 42 Shoppette | 49 Survivor Outreach Services | |

Army Community Service

ARMY COMMUNITY SERVICE

7264 NORMANDY DRIVE

785-239-9435

Monday-Thursday, 8am-5pm • Friday, 8am-4pm

- 24/7 Victim Advocate Emergency
- Employment Readiness
- Family Advocacy
- Financial Services/AER
- Military Family Life Consultants
- Military Family Life After Hours
- Mobilization & Personal Readiness
- Parent Support/EFMP
- Relocation Program
- Volunteer Programs/AFAP/AFTB
- Survivor Outreach Services
- Survivor Outreach Services After Hours

Please check with all facilities
for hours of operation as
they may change due to
Covid 19 requirements.

785-307-1373
785-239-9435
785-239-9435
785-239-9435
785-239-9435
785-221-9483
785-239-9435
785-239-9435
785-239-9435
785-239-9435
785-239-0630
785-221-8595

SOLDIER & FAMILY ASSISTANCE CENTER

674 WARRIOR ROAD

785-239-8430

Monday-Friday, 8am-4:30pm

Child + Youth Services

PARENT CENTRAL

6620 NORMANDY DRIVE

785-239-9885

Monday-Friday, 8am-5pm • Appointments available

- Outreach Services
- Family Child Care
- School Liaison Officer
- SKIES
- Youth Sports & Fitness

785-239-9885
785-239-4313
785-240-3261
785-240-2822
785-239-9223

1ST DIVISION CDC

4012 1ST DIVISION ROAD

785-239-9011

CUSTER HILL SCHOOL AGE CENTER

5810 THOMAS AVENUE

785-239-9220

CUSTER HILL YOUTH CENTER

5800 THOMAS AVENUE

785-239-9222

FORSYTH CDC

2410 SADDLEHORN ROAD

785-239-4846

FORSYTH EAST SCHOOL AGE CENTER

2420 H STREET

785-240-5820

WARREN CDC (CLOSED FOR RENOVATIONS)

6950 WARREN ROAD

785-239-9935

WARREN EAST CDC

6981 WARREN ROAD

785-240-0822

WHITSIDE CDC

676 WARRIOR ROAD

785-239-4978

WHITSIDE NORTH CDC (hourly care)

678 WARRIOR ROAD

785-240-6739

Recreational Services

ANIMAL SHELTER AND ADOPTION CENTER

224 CUSTER AVENUE

785-239-6183

Monday, Tuesday, Thursday, Friday, 10am-6pm • Saturday, 10am-3pm • Closed Wednesday, Sunday + federal holidays

AUTOMOTIVE SKILLS CENTER & CAR WASH

7753 APENNINES DRIVE

785-239-9764

Friday, Noon-8pm • Saturday, Sunday + training holidays, 9am-5pm

B.O.S.S.

7867 NORMANDY DRIVE

785-239-2677

Monday-Friday, 9am-4pm • Closed Saturday, Sunday, federal holidays + training holidays

EQUIPMENT CHECKOUT CENTER

1806 BUFFALO SOLDIER ROAD

785-239-2363

Monday, 8am-5pm, Tuesday, 10am-5pm, Thursday + Friday, 9am-6pm, Saturday, 8am-Noon • Closed Wednesday, Sunday+ federal holidays

FORT RILEY POST LIBRARY	5306 HOOD DRIVE	785-239-5305
Tuesday-Saturday, 11am-6pm • Sunday, Noon-5pm		
FORT RILEY SKEET & TRAP	RANGE 34 VINTON SCHOOL ROAD	785-239-5412
Open during the "Open Trap & Skeet" event dates and times or by reservation only		
HOBBY STUDIO	6918 WARREN ROAD	785-239-9205
Thursday-Saturday, 11am-6pm • Tuesday-Wednesday by reservation		
LEISURE TRAVEL SERVICES	5202 NORMANDY DRIVE	785-239-5614
Monday-Friday, 10am-5pm		
OUTDOOR ADVENTURE PARK	5202 NORMANDY DRIVE	785-239-5412
Monday-Friday, 10am-5pm • BELAY CAFÉ : Monday-Friday, 11am-1:30pm		
RILEY'S COMMUNITY CENTER	446 SEITZ DRIVE	785-784-1000
Tuesday + Wednesday, 9am-6pm • Thursday + Friday, 11am-8pm • Saturday, Noon-7pm • Sunday + Monday, Closed		
SPARETIME INTERACTIVE ENTERTAINMENT	7485 NORMANDY DRIVE	785-239-4366
Wednesday + Thursday, 11am-9pm • Friday + Saturday, 11am-Midnight • Sunday, Noon-6pm		
WARRIOR ZONE	7867 NORMANDY DRIVE	785-240-6618
Monday-Thursday, 8am-9pm • Friday-Sunday, 11am-11pm		

Sports, Fitness + Aquatics

KING FIELD HOUSE FITNESS CENTER	202 CUSTER AVENUE	785-239-3868
Monday-Friday, 5am-9pm • Saturday, Sunday, federal holidays + training holidays, 8am-8pm		
CRAIG FITNESS CENTER	7024 APENNINES DRIVE	785-239-5562
Open 24 hours <i>(Facility first-time users must register between 9am-6pm on non-holiday weekdays for after-hours access)</i>		
LEONARD FITNESS CENTER	7632 MCGLACHLIN STREET	785-239-5771
Monday-Friday, 5am-8pm • Saturday, Sunday, holidays + training holidays, 10am-5pm		
LONG FITNESS CENTER	8069 NORMANDY DRIVE	785-239-4683
Monday-Friday, 5am-8pm • training holidays, 8am-4pm • Closed Saturday, Sunday + federal holidays		
LONG TRAINING POOL	8069 NORMANDY DRIVE	785-239-4684
Lap Swim: Monday-Friday, 5-7:45am, 11am-1pm + 4:30-7pm • Rec Swim: Saturday & Sunday, 1-4pm • Closed federal holidays + training holidays		
ROBINSON FITNESS CENTER	7832 HALE STREET	785-239-4480
Monday-Friday, 5am-8pm • training holidays, Noon-7pm • Closed Saturday, Sunday + federal holidays		
WHITSIDE FITNESS CENTER	684 HUEBNER ROAD	785-239-2573
Open 24 hours <i>(Facility first-time users must register between 9am-6pm on non-holiday weekdays for after-hours access)</i>		
- Fitness Office		785-239-2813
- Intramural Sports Office		785-239-2813
CUSTER HILL AQUATIC PARK	7465 NORMANDY DRIVE	785-239-5860
Closed for renovations		
EYSTER INDOOR POOL	6940 WARREN ROAD	785-239-4854
Lap swim: Monday-Friday, 5am-7:30am & 11am-1pm. Closed federal holidays + training holidays		



facebook.com/
rileymwr



@RileyMWR



@RileyMWR

Always on. Always there.

Earn a degree online

- Expand your knowledge, training and skills
- Advance your career or prepare for a new one
- Pursue goals while working around your family and job responsibilities

Online credit programs from Kansas State University Global Campus include:

- Nine Bachelor's degrees
- 29 Graduate degrees
- 29 Certificate programs
- Two Minors

10 training programs in legal studies

Evening College

- On-campus courses after 5:30 p.m. and in eight-week and 16-week sessions

Daytime courses

- Located on the Manhattan and Polytechnic (Salina) campuses

Airframe and powerplant certification (FAA) review courses

- Offered at Fort Riley



VISIT global.k-state.edu/military

Visit the Fort Riley Education Office for more information.

KANSAS STATE
UNIVERSITY

Global Campus

SHAPE YOUR FUTURE

at Central Michigan University!

Affordable. Accredited. Adaptable.

- » Military and Federal employee savings
- » Degrees employers recognize and respect
- » Individual support from faculty and staff
- » Classes at 15 military installations and online

**Learn more
today**

Fort Riley and online

785-784-4402
cmich.edu/FortRiley



Advertising does not imply U.S. Army endorsement. Visit the Fort Riley Education Office for more information. Central Michigan University is accredited by the Higher Learning Commission (www.hlcommission.org), a regional accreditation agency recognized by the U.S. Department of Education. CMU, an AA/EQ institution, strongly and actively strives to increase diversity and provide equal opportunity for all individuals, irrespective of gender identity or sexual orientation and including but not limited to minorities, females, veterans and individuals with disabilities. (see <http://www.cmich.edu/ocrie>). 3897547 4/2020